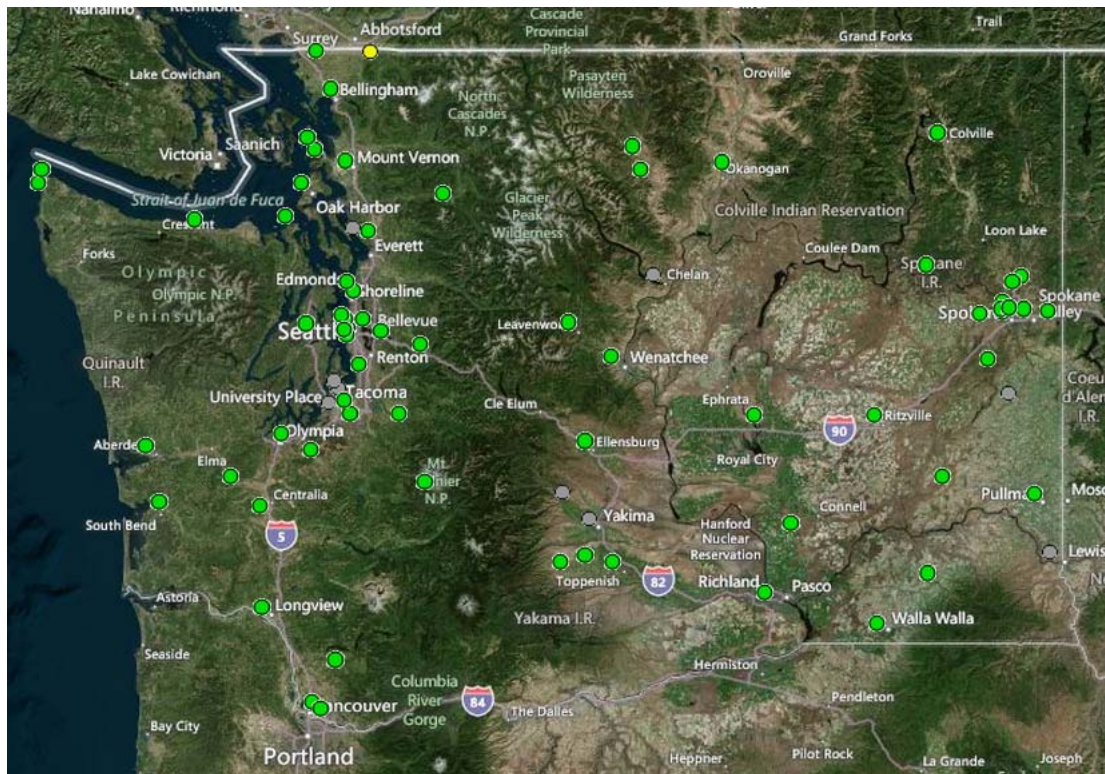
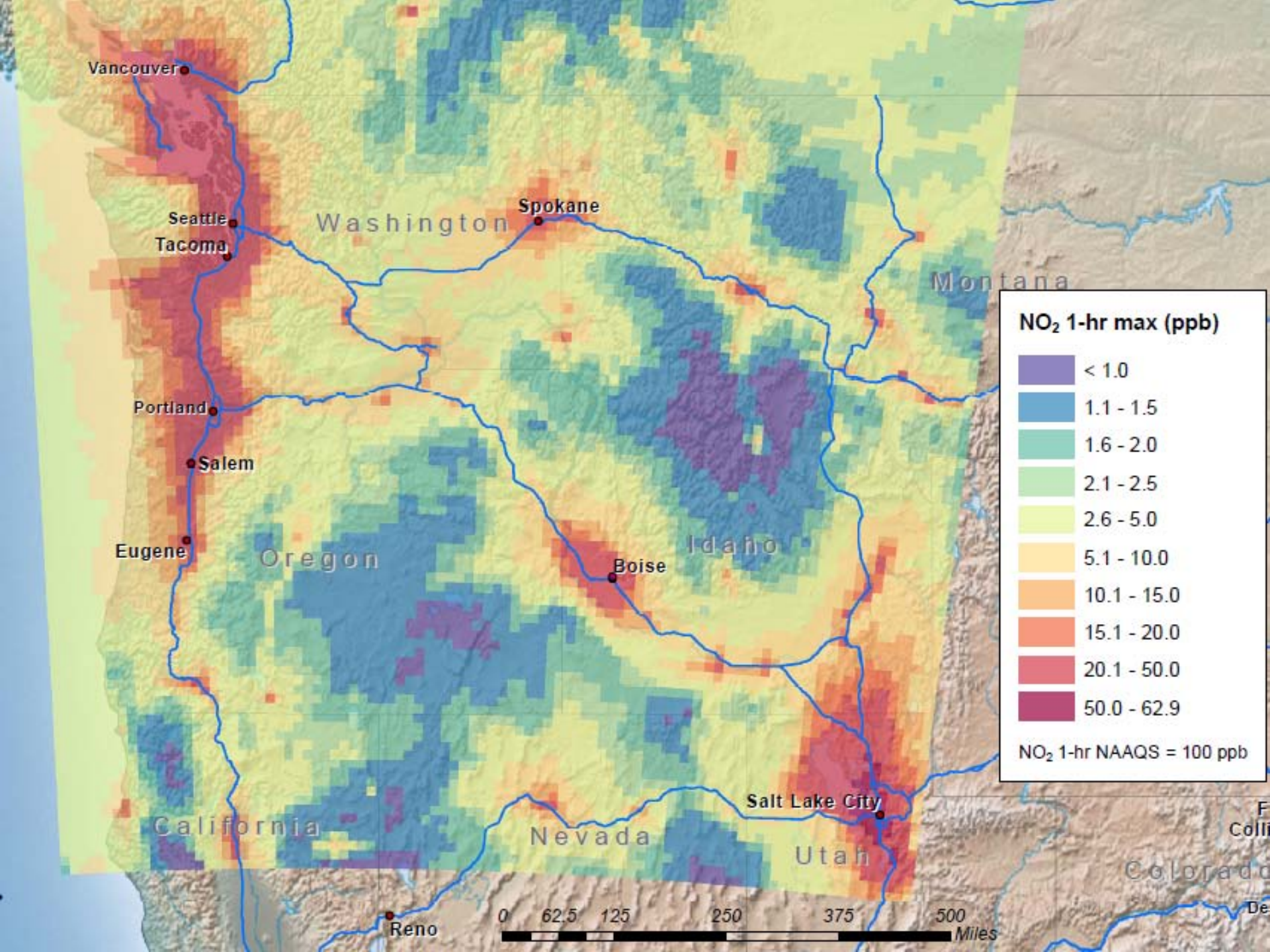


Washington State modeling update



Ranil Dhammapala
Air Quality Program
Washington State Dept of Ecology
Olympia, WA
ranil.dhammapala@ecy.wa.gov
360-407-6807



Permit modeling: short term impacts from intermittent sources

1. No “amortizing” emissions over a year even if the source only operates 20 days/year. Run AERMOD with highest emission rate, using 3-5 years of meteorology.
2. Randomly choose 20 days and calculate the 98th percentile for that year by setting the concs on remaining 345 days to zero. Repeat this step 1000 times.
3. The median of the 1000 iterations is a stable estimate of the 98th percentile for that year.
4. Scripts for implementing this are available on request